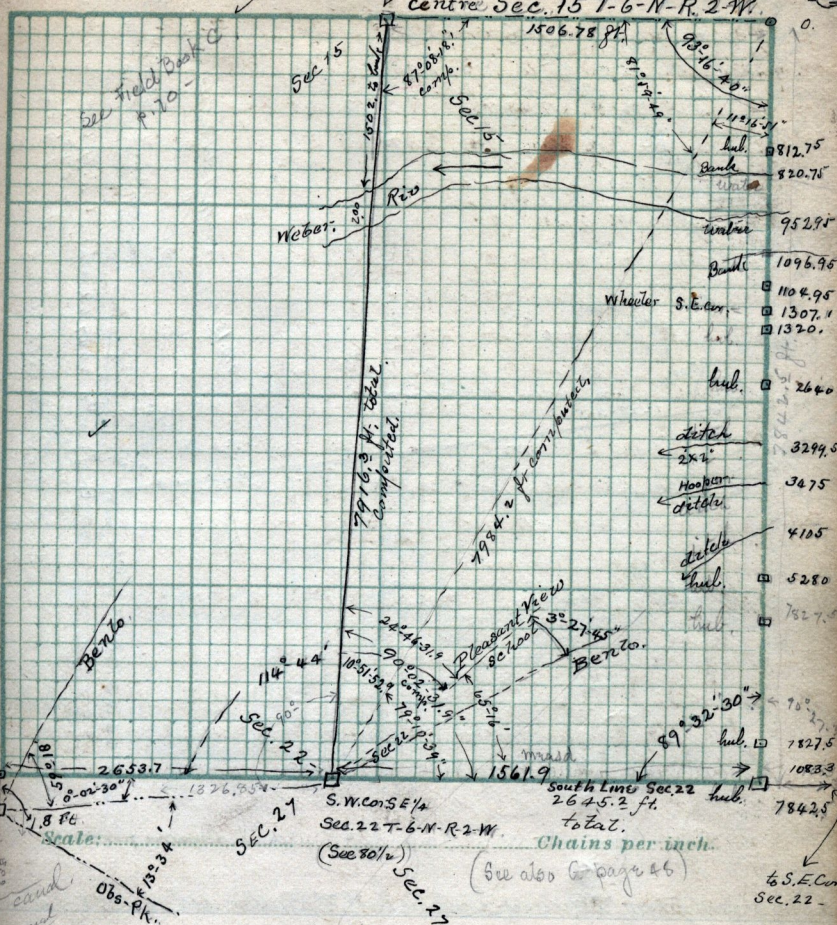


Sec 15 -

old cor. 2699.476 E. to **83** Quar. Cor. centre Sec. 15 T-6-N-R-2-W.



Cor. to Secs 21-22-28-27 T. 6. N. R. 2 - W.

old cor. Stake  
Stake  
sand  
Obs. Pk.

Copy of deed from Thomas J. Wilson, administrator of the estate of George Clinton Wilson (deceased) to George Trivinder, Jan. 30-1875 - T-34 - Part of N.W. Quar. Sec. 25 T-6-N-R-2-W. Beg. 21.44 ch East from N.W. cor. of said Quar. Sec. in the old channel of Weber riv. thence following the channel aforesaid, first in a S.E. then in a N.E. direction to a point 12.60 ch. East from beginning. thence West 12.60 chains to beg. containing 2.50 acres, Surveyed at the request of W.W. Butler, April 16-1891 - Paired & Layman